



L516 HIDEAWAY SERIES



STAINLESS STEEL JETS



110V ELECTRICAL



AIR & WATER DIVERTERS



UNDERWATER LED LIGHTING



PADDED HEADREST



BASIC SPECIFICATIONS

Size: 60"x84"x33.5"
 Jets: 16
 Gallons: 225
 Pump: One 3.0 bhp

CAPACITY



3

DYNASTY **SPAS**



USER FRIENDLY, DIGITAL CONTROLS

L516 HIDEAWAY SERIES

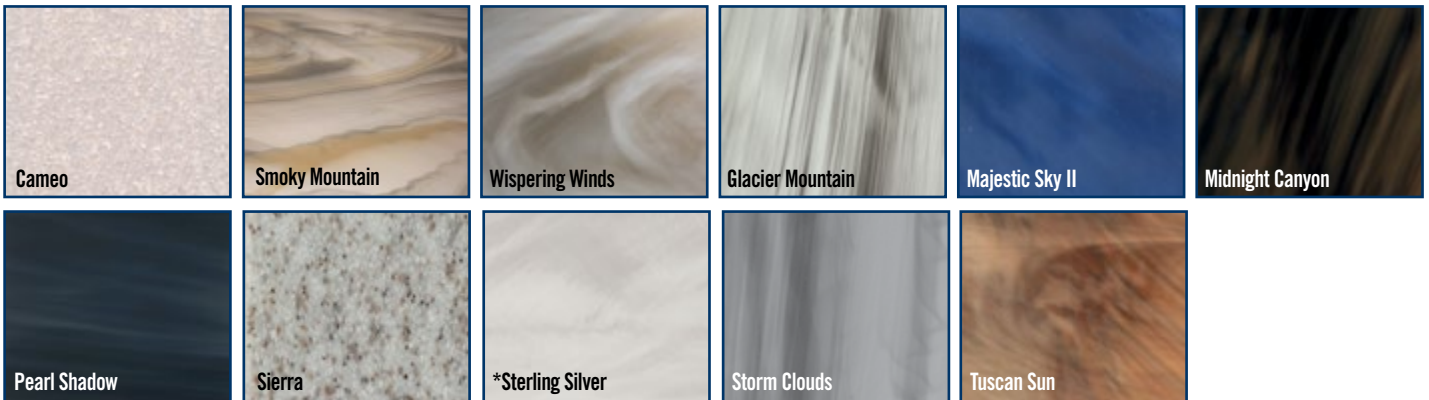
Weight: Dry / Filled: 350 lbs. / 2150 lbs.



STANDARD FEATURES	
Stainless Steel Eclipse Jets	Icynene™ Foam Insulation
Gecko™ YE Class Pack	Heater
k362 Digital Topside Control	Full, Wrap-Around ABS Bottom
SimpleClear™ UV-C Water Sanitization	220V / 60A
One 6.0 bhp Pump	50 ft² Filtration
LED Lighting	6" - 4" Deluxe Cover
Maintenance Free Skirting	*Sterling Silver Acrylic Color
Padded Headrests	

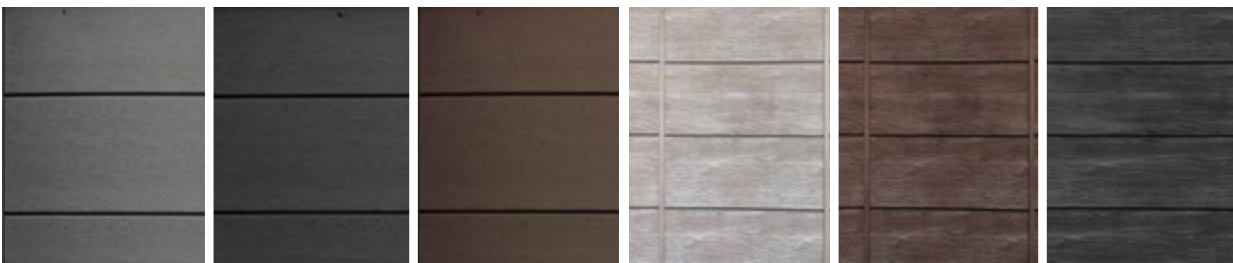
OPTIONAL FEATURES
Circulation Pump
Full Foam
in.Touch™ System for Mobile Devices
Bluetooth Audio System
RMAX™ Insulation Panels
Reflectix™ Insulating Foil Wrap

Acrylic Color Options



Maintenance Free Synthetic Skirting Options

Elite Skirting Options



Gray

Black

Espresso

Coastal Gray

Mocha Brown

Ash



Lucite SPA



ICYNENE

Dynasty Spas reserves the right to change product selections and/or make product modifications. Your Dynasty Spa Dealer/Contractor is an independent business person and not an agent or employee of Dynasty Spas or any of its subsidiaries. Neither Dynasty Spas nor its subsidiaries accept any responsibility for any representations, statements or contracts made by any Hot Tub Dealer/Contractor.

Note: Color samples shown are representations of actual color, but are for identification only. Because the color may vary, Dynasty Spas does not guarantee that this color will be an exact match to the image shown.

The Bluetooth® word mark and logo are registered trademarks owned by Bluetooth SIG, Inc. Other trademarks and trade names are those of their respective owners

DYNASTY SPAS®