

IMPERIA


ALL TILED SPA - Fits 6 Adults

SPECIFICATIONS	
SHELL WEIGHT:	2100 LBS.
WATER WEIGHT:	6503 LBS.
TOTAL SHELL & WATER WEIGHT:	8603 LBS.
WATER VOLUME:	132 Cu.Ft.
MAX WATER GAL:	987 GAL.
SURFACE AREA:	53.7 SQ. FT.
IAPMO#:	1138
FDA#:	2030305


SKID SUPPORT STRUCTURE* BONDED TO SPA

*SKIDS SUPPLIED BY NESPA


LIGHT NICHE

 SPA BRIGHT, 120 V, 100 WATT, 50' CORD, U.L. APPROVED

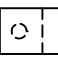
MAIN DRAIN

 6" Round Hockey Puck
Aquapro 6PHAxix
Sumplless Suction Outlet
Floor/Wall 224 GPM @ 6.3fps
Complies w/ ANSI Code
ASME A112.19.8-2007 & VGB 2008


SIDEWALL SUCTION

 6" Round Hockey Puck
Aquapro 6PHAxix
Sumplless Suction Outlet
Floor/Wall 224 GPM @ 6.3fps
Complies w/ ANSI Code
ASME A112.19.8-2007 & VGB 2008


SKIMMER

 FRONT ACCESS SKIMMER, NSF APPROVED


JET

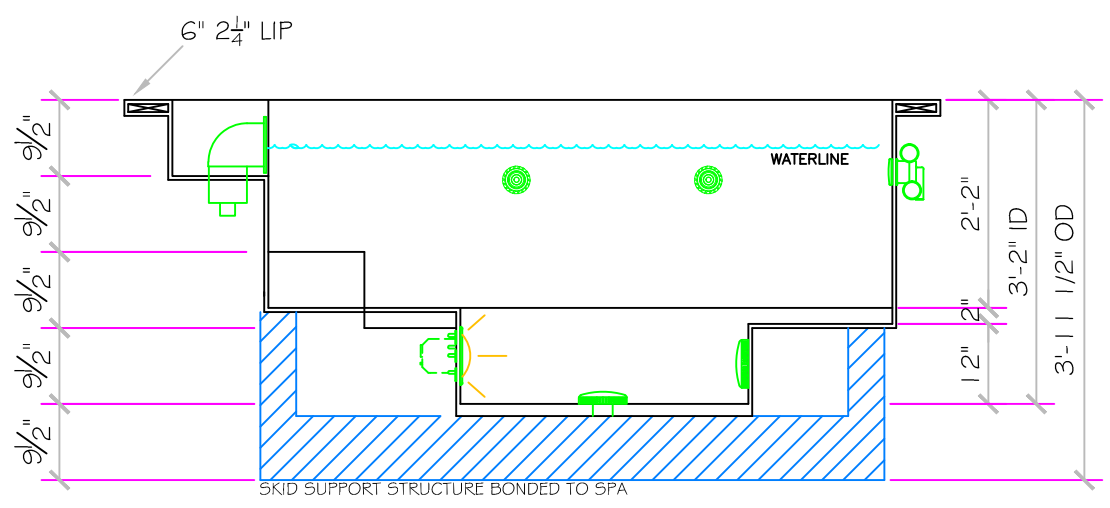
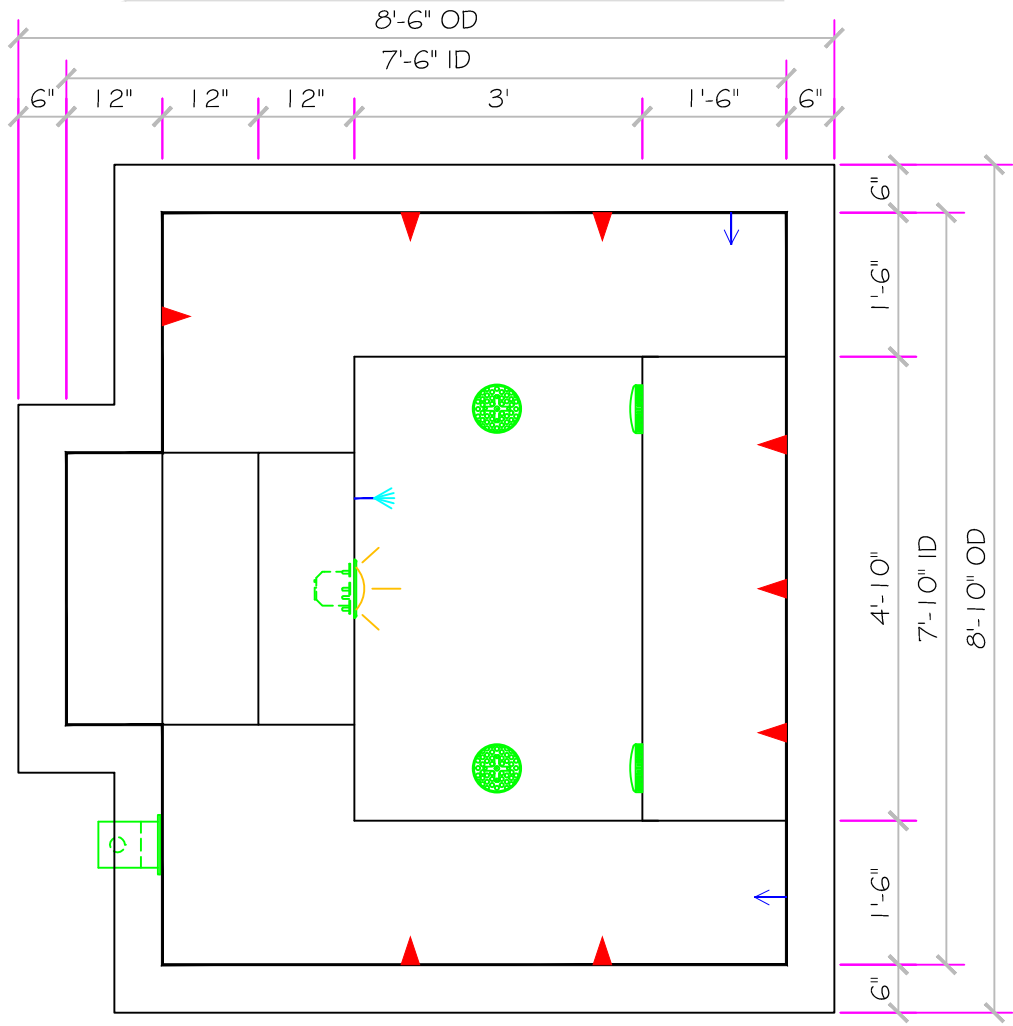
 HYDRO INLETS
1-1/2" WATER - 1-1/2" AIR
HYDROAIR #10-5100
COMPLIES W/ ANSI CODE ASME A112.19.8-07
UL APPROVED

RETURN

 INLET FITTINGS
1-1/2" WALL TYPE W/ EYEBALL
HYDROAIR #10-3500
COMPLIES W/ ANSI CODE ASME A112.19.8-07
UL APPROVED

FILL

 INLET FITTINGS
1-1/2" WALL TYPE W/ EYEBALL
HYDROAIR #10-3500
COMPLIES W/ ANSI CODE ASME A112.19.8-07
UL APPROVED



All drawing dimensions supplied by **NESPA ENTERPRISES INC.** are for reference only. All CAD files were created using AutoCAD file (*.dwg.) and were provided as a service to our customers using AutoCAD. Errors sometimes occur during this process and with software incompatibility upon opening a file. **NESPA ENTERPRISES INC.** and/or any authorized distributor of our products will not be held responsible for problems arising from files which have been converted and does not warranty the documents against deficiencies or typographical errors of any kind. We recommend that all measurements are verified with actual physical product before any custom fabrication in the field occurs.