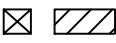


# ACAPULCO


## ALL TILED SPA - Fits 6 Adults

SPECIFICATIONS	
SHELL WEIGHT:	2000 LBS.
TOTAL WEIGHT:	9452 LBS.
WATER GAL:	893.9 GAL.
WATER VOLUME:	119.5 Cu.Ft.
WATER WEIGHT:	7452 LBS.
SURFACE AREA:	49.0 SQ. FT.
IAPMO#:	1138
FDA#:	2030305


**SKID SUPPORT STRUCTURE\* BONDED TO SPA TO SPA**

 \*SKIDS SUPPLIED BY NESPA


**LIGHT NICHE**

 SPA BRIGHT, 120 V, 100 WATT, 50' CORD, U.L. APPROVED

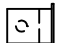
**MAIN DRAIN**

 AquaStar 32CDFLFR, 32" Channel Drain, Approved Max Flow Rate: Floor = 236 GPM @ 3.4 fps Wall = 136 GPM @ 1.9 fps V.G.B Approved Safety Drain


**SIDEWALL SUCTION**

 5" HIGH FLOW SUCTIONS Waterway 640-357xV Super Hi-Flo Suction Assy. Max Flow 180 GPM Complies w/ ANSI Code ASME A112.19.8-2007 & VGB 2008


**SKIMMER**

 FRONT ACCESS SKIMMER, NSF APPROVED


**JET**

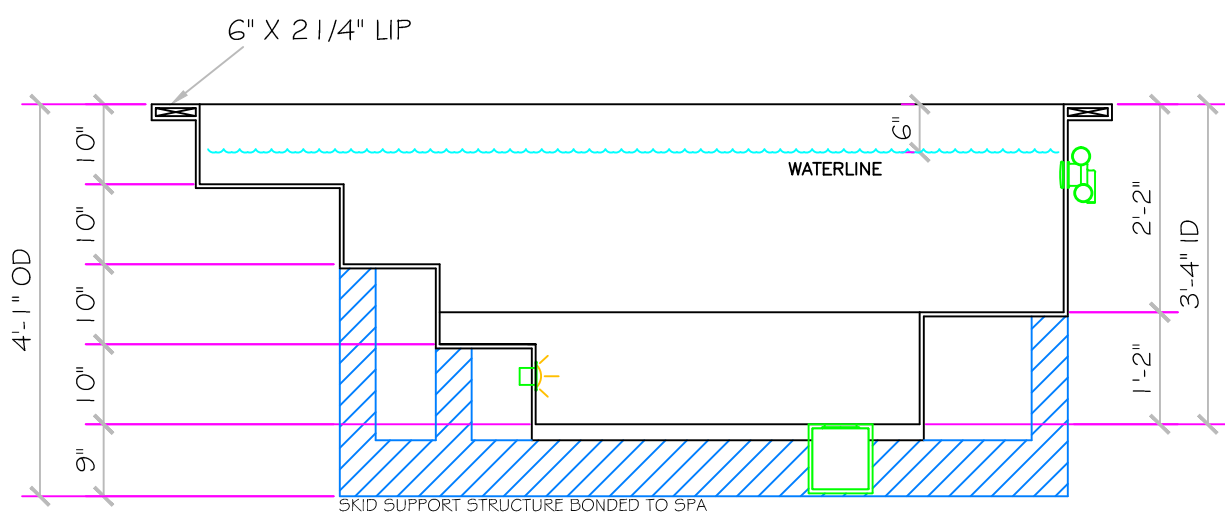
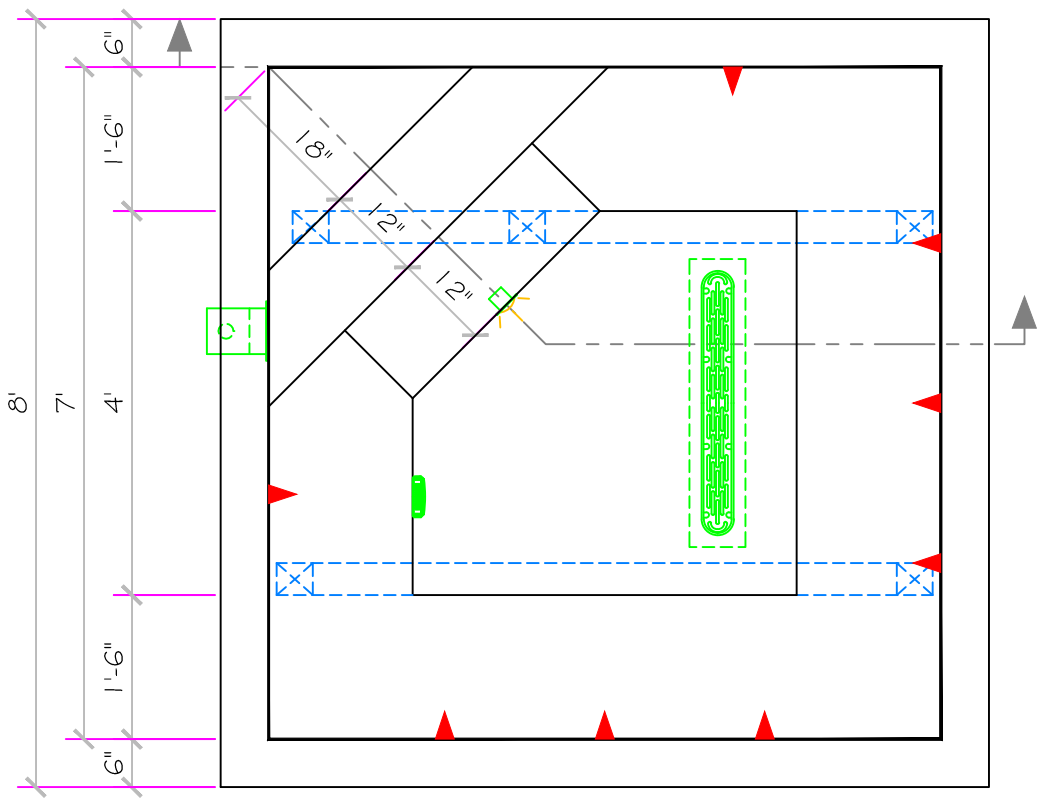
 HYDRO INLETS 1-1/2" WATER - 1-1/2" AIR HYDROAIR #10-5100 COMPLIES W/ ANSI CODE ASME A112.19.8-07 UL APPROVED

**RETURN**

 INLET FITTINGS 1-1/2" WALL TYPE W/ EYEBALL HYDROAIR #10-3500 COMPLIES W/ ANSI CODE ASME A112.19.8-07 UL APPROVED

**FILL**

 INLET FITTINGS 1-1/2" WALL TYPE W/ EYEBALL HYDROAIR #10-3500 COMPLIES W/ ANSI CODE ASME A112.19.8-07 UL APPROVED



\*ALL DIMENSIONS SUBJECT TO 1/4" TOLERANCES\*

**NESPA ENTERPRISES INC.**  
 2800 Richter Ave. Suite C Oroville, CA 95966  
 Office: (530) 534-9910 Fax: (530) 534-9915  
 E-Mail: [jim@tiledspas.com](mailto:jim@tiledspas.com) Web Site: [www.tiledspas.com](http://www.tiledspas.com)



If printing as a PDF:  
 Page Scaling:   
 DWG NAME: NESPA\_RES\_MODELS

SCALE: 1/2" = 1'  
 DATE: 7/22/2011

DWG TYPE: SD  
 SHEET: PAGE 1 OF 1

These drawings, concepts, and details contained herein are the original proprietary designs of NESPA ENTERPRISES, developed over many years of experience in the industry and as such are protected by the copyright laws of the United States Government. Reproduction of any of the above without written permission to do so by NESPA ENTERPRISES, is illegal.